

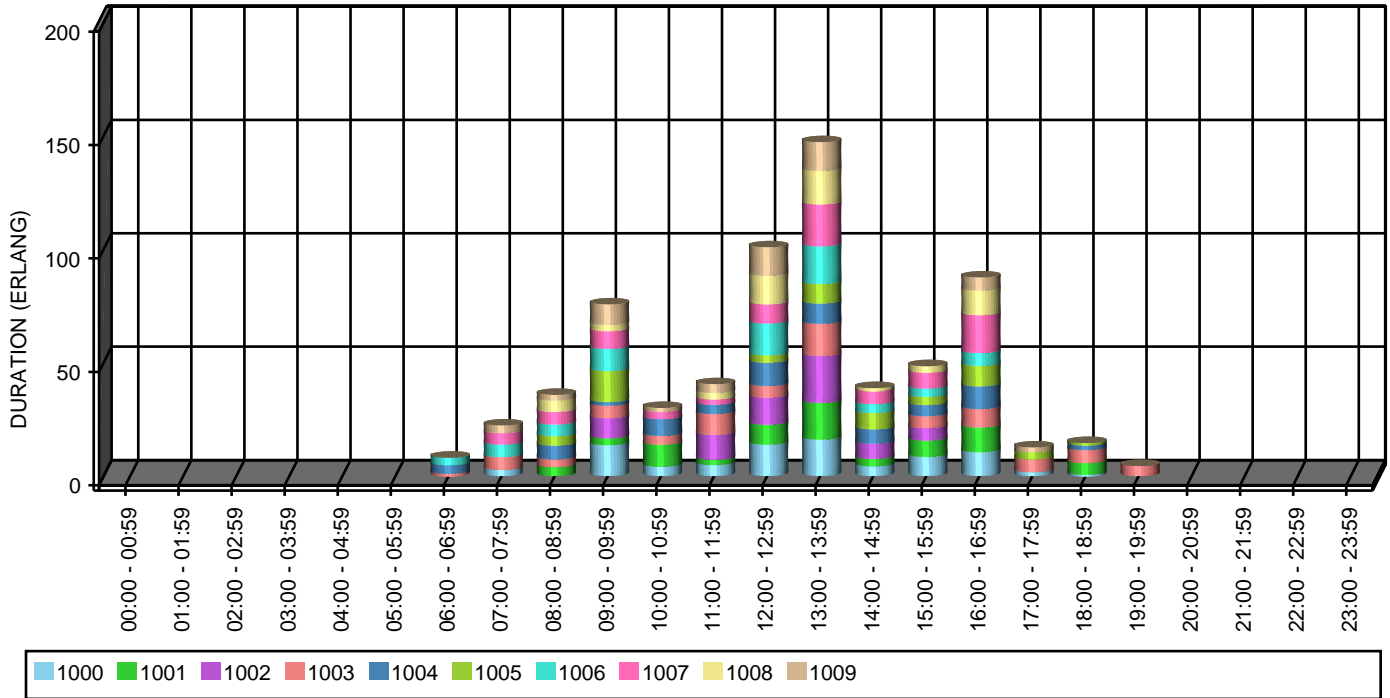
# Trunk Traffic by Hour



From 11/2/2009 To 11/2/2009

Trunk Group: Incoming

Date: 11/2/2009



Number of Trunks Selected: 96  
 Maximum Hourly Capacity: 96 Erlangs

Time of Day	Number of Calls	# Active Trunks	Grade of Service (P)	Total Duration (Erlangs)
00:00 - 00:59	0	0		0.00
01:00 - 01:59	0	0		0.00
02:00 - 02:59	0	0		0.00
03:00 - 03:59	0	0		0.00
04:00 - 04:59	0	0		0.00
05:00 - 05:59	0	0		0.00
06:00 - 06:59	3	3	0.00	8.05
07:00 - 07:59	5	5	0.00	22.22
08:00 - 08:59	10	8	0.00	35.73
09:00 - 09:59	33	10	0.00	75.58
10:00 - 10:59	11	6	0.00	29.95
11:00 - 11:59	12	8	0.00	40.42
12:00 - 12:59	38	10	0.00	100.78
13:00 - 13:59	50	10	0.00	147.13
14:00 - 14:59	16	8	0.00	38.73
15:00 - 15:59	16	9	0.00	48.40
16:00 - 16:59	35	9	0.00	87.47
17:00 - 17:59	4	4	0.00	12.52
18:00 - 18:59	5	5	0.00	14.52
19:00 - 19:59	1	1	0.00	4.40
20:00 - 20:59	0	0		0.00
21:00 - 21:59	0	0		0.00
22:00 - 22:59	0	0		0.00
23:00 - 23:59	0	0		0.00
<b>239</b>	<b>239</b>			<b>665.90</b>

# Trunk Traffic by Hour



From 11/2/2009 To 11/2/2009

Trunk Group: Incoming

Date: 11/2/2009

Trunk	Number of Calls	# Active Trunks	Grade of Service (P)	Total Duration (Erlangs)
<b>06:00 - 06:59</b>				
1003	1	1	0.00	0.98
1004	1	1	0.00	3.78
1006	1	1	0.00	3.28
<b>07:00 - 07:59</b>				
1000	1	1	0.00	2.72
1003	1	1	0.00	5.62
1006	1	1	0.00	5.55
1007	1	1	0.00	5.03
1009	1	1	0.00	3.30
<b>08:00 - 08:59</b>				
1001	1	1	0.00	3.93
1003	1	1	0.00	3.40
1004	2	1	0.00	6.08
1005	2	1	0.00	4.15
1006	1	1	0.00	5.17
1007	1	1	0.00	5.50
1008	1	1	0.00	5.10
1009	1	1	0.00	2.40
<b>09:00 - 09:59</b>				
1000	5	1	0.00	13.60
1001	2	1	0.00	3.03
1002	3	1	0.00	8.87
1003	2	1	0.00	5.53
1004	2	1	0.00	1.55
1005	7	1	0.00	13.67
1006	3	1	0.00	9.80
1007	4	1	0.00	7.82
1008	2	1	0.00	2.75
1009	3	1	0.00	8.97
<b>10:00 - 10:59</b>				
1000	3	1	0.00	4.13
1001	2	1	0.00	9.70
1003	1	1	0.00	3.85
1004	2	1	0.00	7.42
1007	1	1	0.00	3.23
1009	2	1	0.00	1.62
<b>11:00 - 11:59</b>				
1000	1	1	0.00	4.88
1001	1	1	0.00	2.32
1002	3	1	0.00	10.92
1003	2	1	0.00	9.20
1004	1	1	0.00	4.13
1007	2	1	0.00	2.32
1008	1	1	0.00	2.87
1009	1	1	0.00	3.78
<b>12:00 - 12:59</b>				
1000	5	1	0.00	13.82
1001	2	1	0.00	8.80
1002	4	1	0.00	11.93
1003	2	1	0.00	5.13
1004	2	1	0.00	10.28
1005	5	1	0.00	3.27

# Trunk Traffic by Hour



From 11/2/2009 To 11/2/2009

Trunk Group: Incoming

Date: 11/2/2009

Trunk	Number of Calls	# Active Trunks	Grade of Service (P)	Total Duration (Erlangs)
<b>12:00 - 12:59</b>				
1006	5	1	0.00	14.00
1007	4	1	0.00	8.45
1008	5	1	0.00	12.62
1009	4	1	0.00	12.48
<b>13:00 - 13:59</b>				
1000	8	1	0.00	16.00
1001	4	1	0.00	16.25
1002	6	1	0.00	20.67
1003	6	1	0.00	14.18
1004	4	1	0.00	8.95
1005	3	1	0.00	8.58
1006	5	1	0.00	16.62
1007	6	1	0.00	18.48
1008	4	1	0.00	14.82
1009	4	1	0.00	12.58
<b>14:00 - 14:59</b>				
1000	3	1	0.00	4.30
1001	1	1	0.00	3.25
1002	3	1	0.00	6.72
1004	2	1	0.00	6.30
1005	2	1	0.00	7.20
1006	1	1	0.00	3.95
1007	2	1	0.00	5.82
1008	2	1	0.00	1.20
<b>15:00 - 15:59</b>				
1000	2	1	0.00	8.40
1001	2	1	0.00	7.23
1002	2	1	0.00	5.52
1003	1	1	0.00	5.20
1004	3	1	0.00	4.95
1005	1	1	0.00	3.58
1006	2	1	0.00	3.70
1007	2	1	0.00	7.00
1008	1	1	0.00	2.82
<b>16:00 - 16:59</b>				
1000	5	1	0.00	10.48
1001	4	1	0.00	10.92
1003	2	1	0.00	8.10
1004	3	1	0.00	10.02
1005	3	1	0.00	9.05
1006	3	1	0.00	5.65
1007	6	1	0.00	16.68
1008	6	1	0.00	10.83
1009	3	1	0.00	5.73
<b>17:00 - 17:59</b>				
1000	1	1	0.00	1.70
1003	1	1	0.00	5.57
1005	1	1	0.00	3.23
1009	1	1	0.00	2.02
<b>18:00 - 18:59</b>				
1000	1	1	0.00	0.55
1001	1	1	0.00	5.18

# Trunk Traffic by Hour



From 11/2/2009 To 11/2/2009

Trunk Group: Incoming

Date: 11/2/2009

Trunk	Number of Calls	# Active Trunks	Grade of Service (P)	Total Duration (Erlangs)
<b>18:00 - 18:59</b>				
1003	1	1	0.00	5.72
1004	1	1	0.00	2.22
1005	1	1	0.00	0.85
<b>19:00 - 19:59</b>				
1003	1	1	0.00	4.40
	<b>239</b>			<b>665.90</b>